

2020



Leading the way to a safer Essex

2020 Consultation Briefing





13th January 2016



1st February 2016 – 25th April 2016



8th June 2016



2020



Leading the way to a safer Essex

Current and future operating context



Future demand for response resources



Incidents attended by ECFRS have reduced by 45% in 10 years

2020



Leading the way to a safer Essex

	2010/11	2011/12	2012/13	2013/14	2014/15	Reduction in 5 years	Percentage of incidents in 2014/15
All false alarms	8885	6593	6082	5826	5802	35% decrease	44%
False alarms due to apparatus	4693	2778	2605	2388	2474	47% decrease	19%
False alarms: good intent	3727	3509	3235	3255	3161	15% decrease	24%
Hoax calls	465	306	242	183	167	64% decrease	1%
All special service	3789	3635	3714	3738	3421	20% decrease	26%
Road-traffic collisions	1134	1151	1219	1212	1290	14% increase	10%
Other emergency special services	2655	2484	2495	2526	2131	25% decrease	16%
All fires	5798	5873	4213	4264	3918	32% decrease	30%
Outdoor fires	3055	3253	1879	1984	1729	43% decrease	13%
Dwelling fires	1196	1154	1099	1013	1014	15% decrease	8%
Road vehicle fires	923	805	742	739	689	25% decrease	5%
Other fires	624	661	493	528	486	22% decrease	4%

Breakdown of incidents attended by ECFRS over the past 5 years

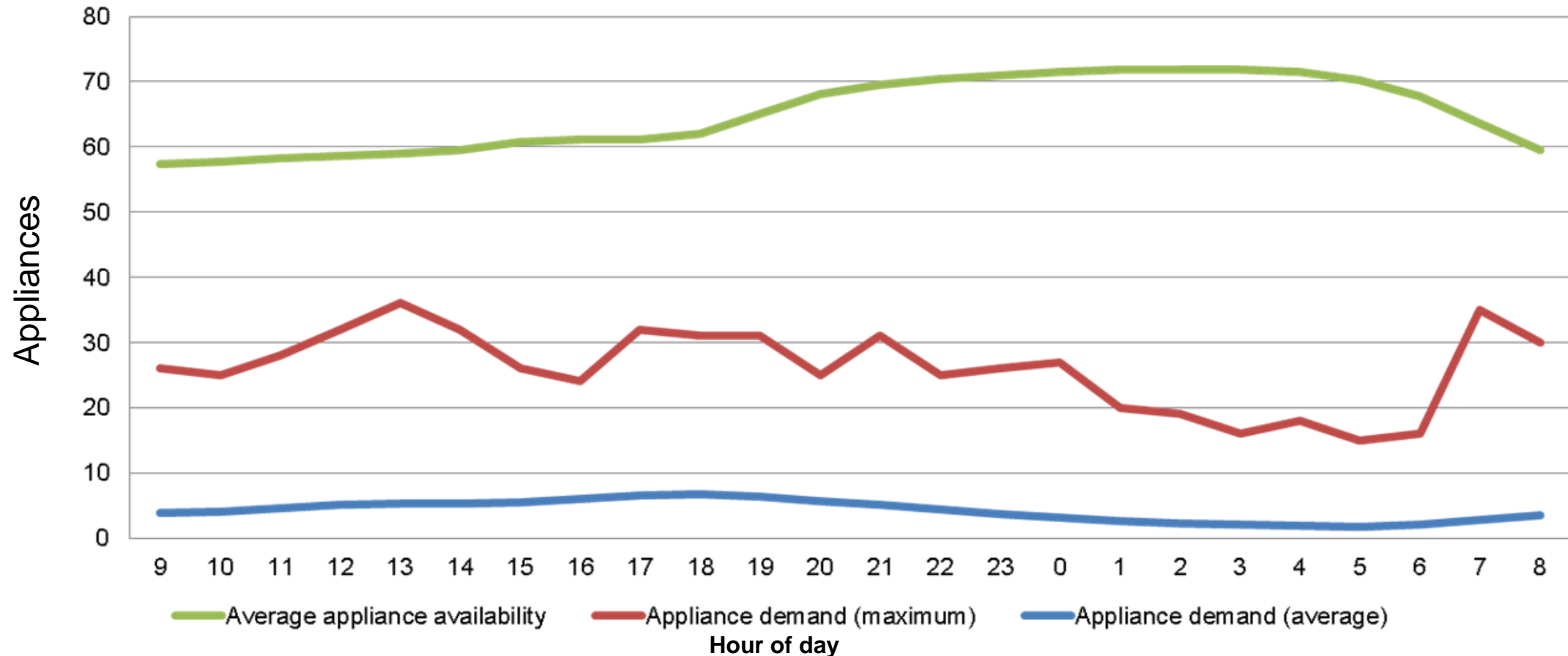


	2010/11	2011/12	2012/13	2013/14	2014/15
Fire fatalities	13	9	12	9	2
Fire injuries	92	103	93	109	104
RTC fatalities	24	18	18	16	16
RTC injuries	671	735	742	856	880
Other special service fatalities	21	30	25	22	23
Other special service injuries	156	182	196	171	137

Breakdown of fatal and non-fatal casualties at incidents attended by ECFRS over the past 5 years

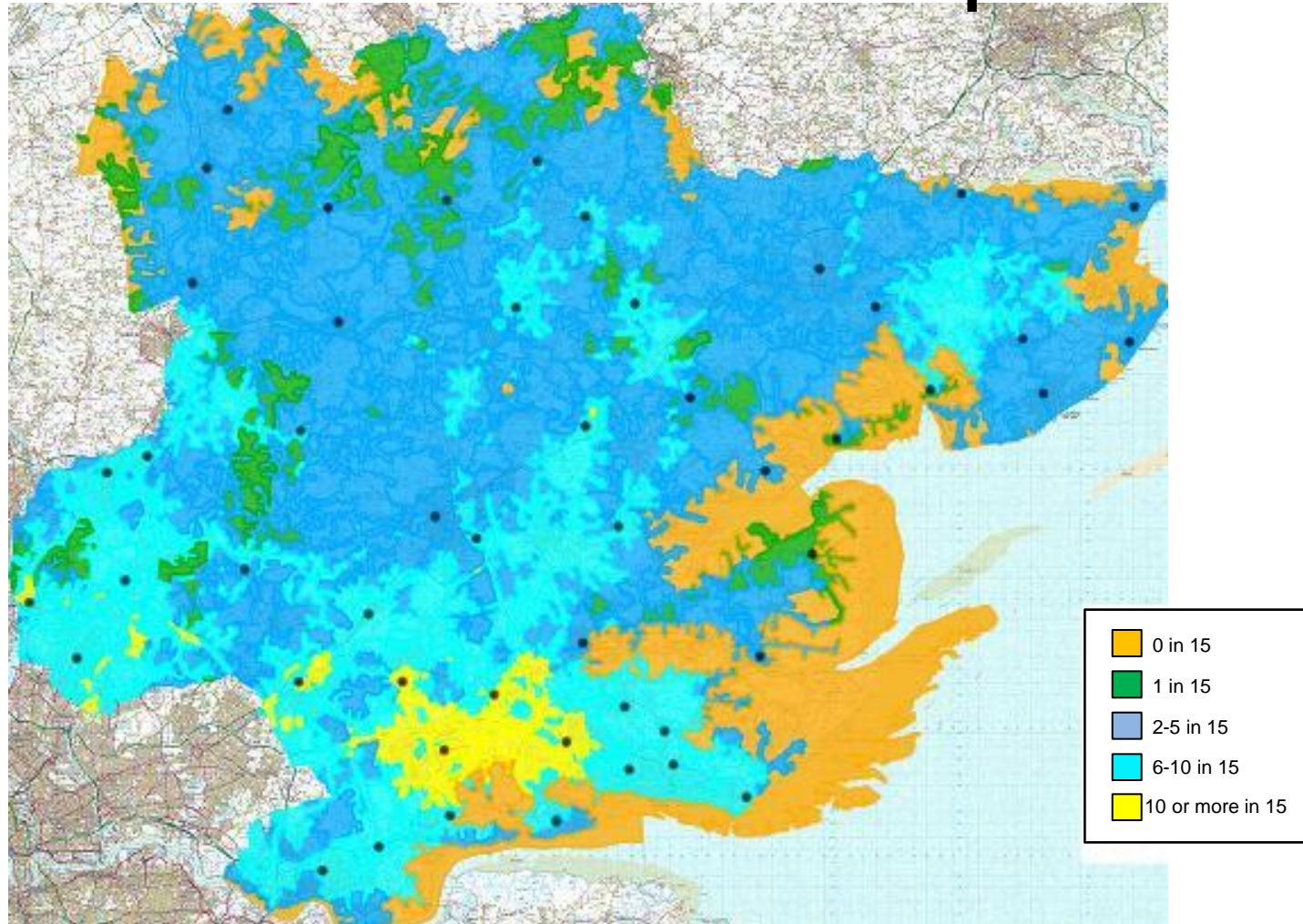


Operational response resources exceed demand



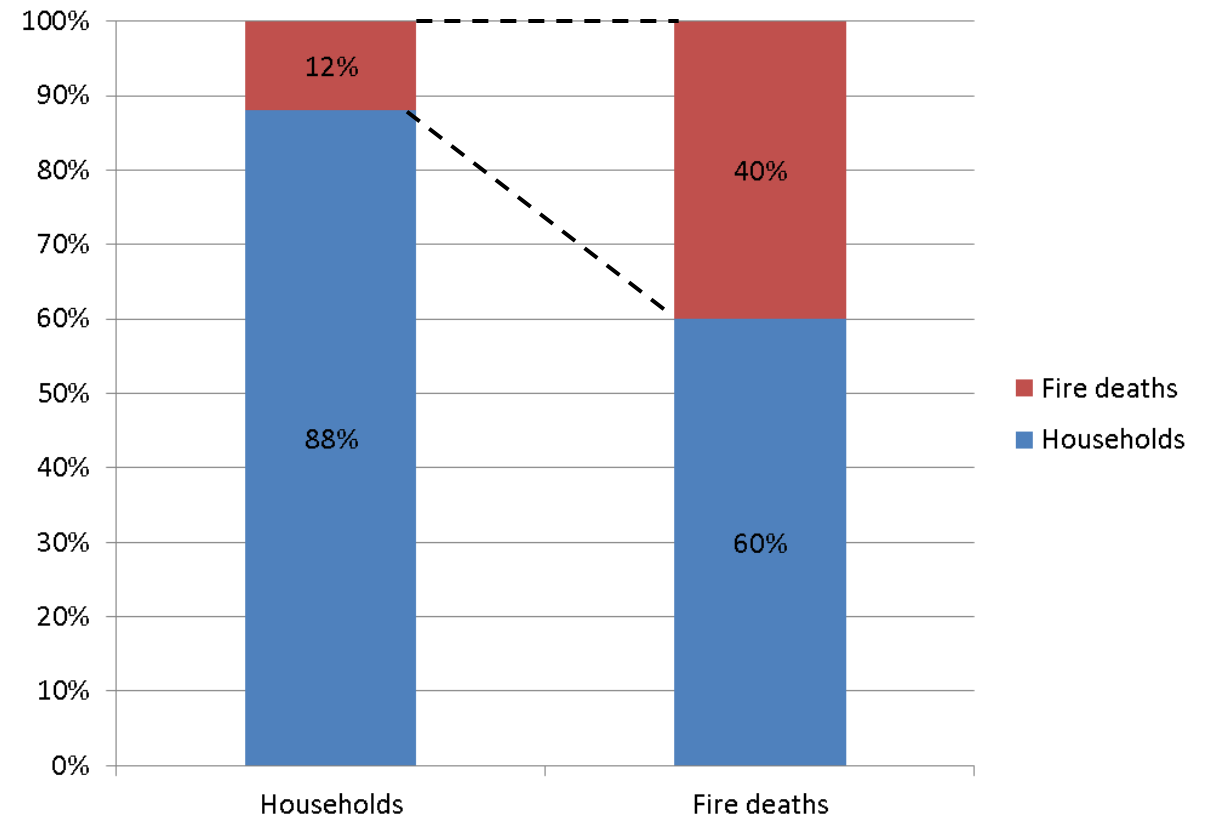


Operational resources are not spread evenly





- $\approx 12\%$ of households do not have a smoke alarm
- No smoke alarm in 40% of home fire deaths
- 3.3 times more likely to die in a fire without a smoke alarm



*Fire Statistics: Great Britain April 2013 to March 2014

2020



Leading the way to a safer Essex



Consultation #1





Safer communities proposals

- Deliver safety messages to every school child in Essex;
- Ensure there is a working smoke alarm in 100% of households;
- Work with partner agencies in meeting other social needs of the vulnerable members of our communities;
- Support the installation of systems such as sprinklers for the protection of buildings and occupants;
- Work with drivers and riders to reduce the number of people killed or injured on our roads.

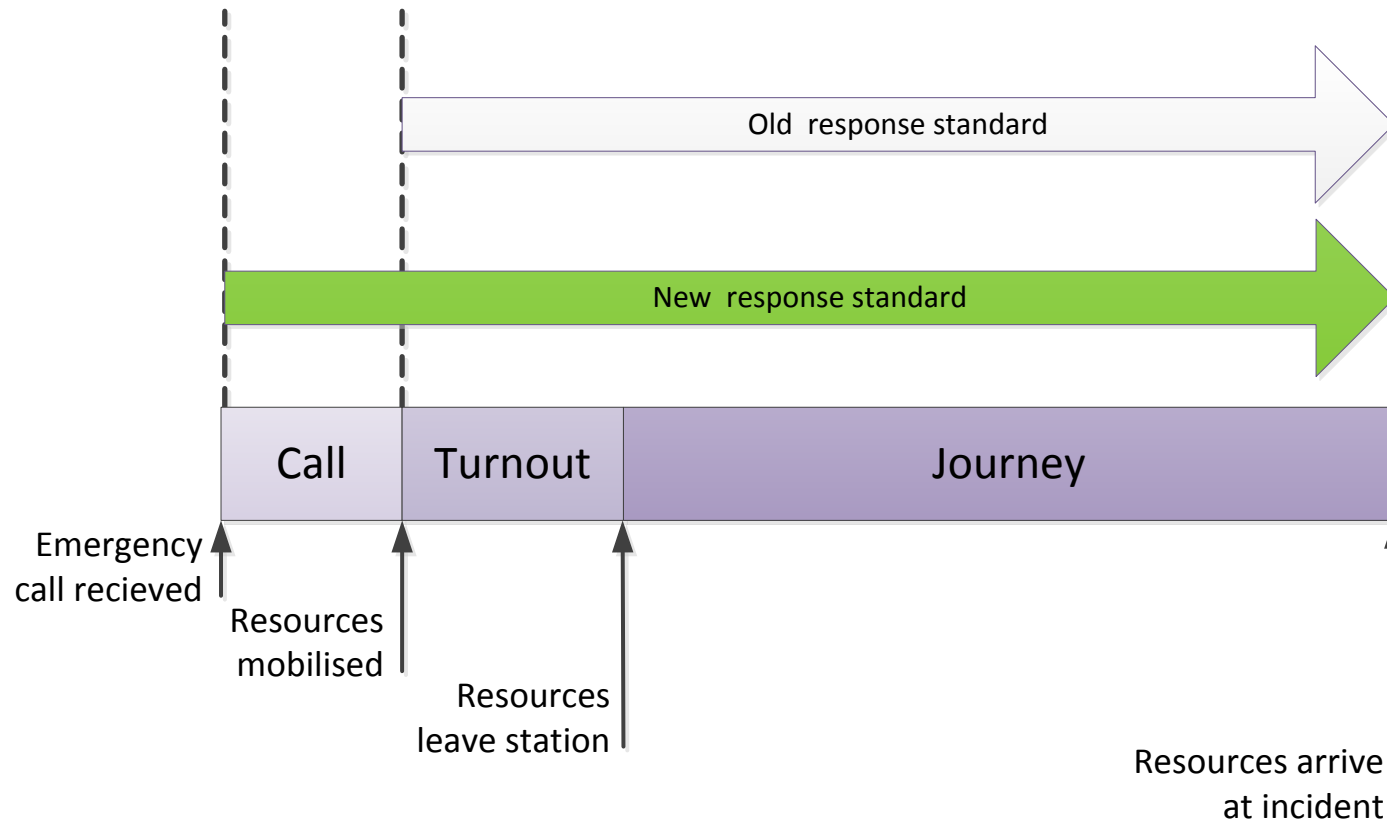


New response standards

90% within 15 minutes

Average of 10 minutes to potentially life threatening calls

From time of call





*In terms of main priorities for ECFRS, the **public favoured rebalancing operational resources** against risk (with an associated increase in prevention and protection work with partners) – and raising the council tax precept was their least popular option. But the **priorities were exactly reversed for the firefighters** – who prioritised raising council tax while not adjusting operational resources.*

(ORS report on focus group findings)

2020



Leading the way to a safer Essex

Investment in Prevention and protection

2020



Leading the way to a safer Essex

Proposal	Revenue Cost (£M)
Education	0.7
Smoke alarms	0.5
Vulnerable people	0.8
Sprinklers	0.6
Road safety	0.4
Total	3.0

2020



Leading the way to a safer Essex

Options for consultation



Types of change considered

- Close fire stations
- Reduce the number of fire engines
- Reduce the number of firefighters
- Change fire engines to on-call crewing



Two pump fire stations

- 10 wholetime fire stations have 2 fire engines
 - Removal of 7 would still allow us to meet the response standards
 - Conversion of all 10 to On-call would still allow us to meet the response standards
 - Conversion of all 10 to day crewed would still allow us to meet the response standards



Common to all proposals

- Day crewing fire stations to On-call
 - Dunmow, Baddow, South Woodham, Dovercourt, Waltham Abbey
- Remove Pinzgauers from
 - Manningtree, Burnham, Dunmow, Billericay
- Additional fire engine at Dunmow





Option 1

- Change from two fire engines to one fire engine at the following locations: **Orsett, Rayleigh Weir, Loughton, Southend, Grays, Corringham and Frinton.**
- Change the crewing of the second fire engine at the following fire stations from wholetime to on-call: **Clacton and Harlow.**
- Remove the Pinzgauer appliances from the following locations: **Manningtree, Billericay, Burnham on Crouch**
- Replace the Pinzgauer at **Great Dunmow** with a fire engine.
- Change the crewing system to on-call at the following fire stations: **Dovercourt, South Woodham Ferrers, Great Baddow, Waltham Abbey and Great Dunmow**



Option 2

- Change from two fire engines to one fire engine at the following locations:
Orsett, Rayleigh Weir, Loughton, Corringham and Frinton
- Change the crewing of the second fire engine at **Clacton** to on-call.
- Remove the Pinzgauer appliances from the following locations:
Manningtree, Billericay, Burnham on Crouch
- Replace the Pinzgauer at **Great Dunmow** with a fire engine.
- Change the crewing system to on-call at the following fire stations:
Dovercourt, South Woodham Ferrers, Great Baddow, Waltham Abbey and Great Dunmow



Option 3

- Change from two fire engines to one fire engine at the following locations:
Orsett, Rayleigh Weir, Loughton, Southend, Grays, Harlow and Clacton.
- Change the crewing of the second fire engine at **Brentwood** to on-call.
- Remove the Pinzgauer appliances from the following locations:
Manningtree, Billericay, Burnham on Crouch
- Replace the Pinzgauer at **Great Dunmow** with a fire engine.
- Change the crewing system to on-call at the following fire stations:
Dovercourt, South Woodham Ferrers, Great Baddow, Waltham Abbey and Great Dunmow



3 options – in summary

Option	Fire stations	Fire engines	Wholetime staff	On-call staff	Saving (£M)	Standard 1: Attend 90% of all incidents within 15 minutes		Standard 2: Attend Potentially Life Threatening Calls within an average of 10 minutes	
						Predicted performance %	Difference from current	Predicted performance Mins	Difference from current
Current	50	74	570	437		91.3		09:28	
1	50	64	360	466	8.6	90.4	-1	09:38	00:10
2	50	66	432	456	6.4	90.9	-0.4	09:33	00:04
3	50	64	336	467	10	89.8	-1.5	09:44	00:16



Local Government Funding Settlement

Revenue support grant reduced by 75%

Upper Tier Authorities - 80%

Districts - 70%

Fire Authorities - 48%

Essex Fire Authority - 49% £8.0m reduction in RSG

2016/17	-£2.1m
2017/18	-£3.2m
2018/19	-£1.7m
2019/20	-£1.0m

2020



Leading the way to a safer Essex

Are the proposals financially sustainable?

Expected changes by 2020

2015/16 Deficit

£1m

£8M

Reduction in RSG

Inflation and other -ve

£4.2M

£4.3M

Tax base and other +ve

£2M

Other savings

£ 6.9M gap

£3M

P&P investment

£ 9.9M gap

- Funding gap will be £6.9M or £9.9M if we invest an additional £3M in prevention and protection



3 options – council tax implications

Option	Fire stations	Fire engines	Wholetime staff	On-call staff	Saving (£M)	Standard 1: Attend 90% of all incidents within 15 minutes		Standard 2: Attend Potentially Life Threatening Calls within an average of 10 minutes		Impact on council tax PER YEAR	
						Predicted performance %	Difference from current	Predicted performance Mins	Difference from current	Change (annual)	£/ Band D (annual increase)
Current	50	74	570	437		91.3		09:28			
1	50	64	360	466	8.6	90.4	-1	09:38	00:10	↑ 0.8%	£0.55
2	50	66	432	456	6.4	90.9	-0.4	09:33	00:04	↑ 2.0%	£1.35
3	50	64	336	467	10	89.8	-1.5	09:44	00:16	--	£0.00

2020



Leading the way to a safer Essex

Consultation



Single question:

Which of the following options do you support?

Option 1. A 0.8% increase (approx. £0.55 per year on Band D property) in the fire service portion of council tax and a reduction in response resources

Option 2. A 2% increase (approx. £1.35 per year on Band D property) in the fire service portion of council tax and a smaller reduction in response resources

Option 3. No increase in council tax and a larger reduction in response resources



- Advice and support
- Quality assurance of our work



- Online questionnaire
- Focus groups
- Analysis and reporting

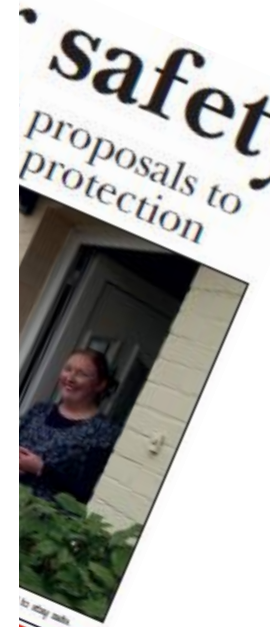


Preparing for the future

Investing in your safety work holds the key to invest an extra £3 million

The modern fire and rescue service is a complex organisation with so much more than fire engines and firefighters rushing to the scene after an incident has happened. These days, if not more, effort is spent on prevention work to ensure that incidents don't happen in the first place.

All Options	Option One	Option Two	Option Three
<p>All of the options contain the same common factors:</p> <ul style="list-style-type: none"> £3 million extra invested in prevention Additional savings of over £2m from support functions NO fire station closures 	<p>Small increase in council tax and medium reduction in response resources</p>	<p>Larger increase in council tax and smaller reduction in response resources.</p>	<p>No increase in council tax and larger reduction in response resources.</p>
<p>Response standard</p> <ul style="list-style-type: none"> 90% of all incidents within 15 minutes Life threatening calls in an average of 10 minutes. 	<p>Appliances and crewing</p> <p>Specialist off road vehicles, known as, Pinzgauer appliances, will be removed from the following fire stations:</p> <ul style="list-style-type: none"> Billericay Fire Station Manningree Fire Station Burnham Fire Station Great Dunmow Fire Station (Note; a second fire engine is to be maintained at Great Dunmow) <p>The following fire engines are to be converted from the day crewing duty system to the on-call crewing system:</p> <ul style="list-style-type: none"> Dovercourt Fire Station South Woodham Ferrers Fire Station Great Baddow Fire Station Waltham Abbey Fire Station Great Dunmow Fire Station 	<p>Appliances and crewing</p> <p>Specialist off road vehicles, known as, Pinzgauer appliances, will be removed from the following fire stations:</p> <ul style="list-style-type: none"> Billericay Fire Station Manningree Fire Station Burnham Fire Station Great Dunmow Fire Station (Note; a second fire engine is to be maintained at Great Dunmow) <p>The following fire engines are to be converted from the day crewing duty system to the on-call crewing system:</p> <ul style="list-style-type: none"> Dovercourt Fire Station South Woodham Ferrers Fire Station Great Baddow Fire Station Waltham Abbey Fire Station Great Dunmow Fire Station 	<p>Appliances and crewing</p> <p>Specialist off road vehicles, known as, Pinzgauer appliances, will be removed from the following fire stations:</p> <ul style="list-style-type: none"> Billericay Fire Station Manningree Fire Station Burnham Fire Station Great Dunmow Fire Station (Note; a second fire engine is to be maintained at Great Dunmow) <p>The following fire engines are to be converted from the day crewing duty system to the on-call crewing system:</p> <ul style="list-style-type: none"> Dovercourt Fire Station South Woodham Ferrers Fire Station Great Baddow Fire Station Waltham Abbey Fire Station Great Dunmow Fire Station
<p>Financial information</p> <p>Requires 0.8% increase the fire service proportion of council tax: Approx 55p on a Band D property</p> <p>Projected savings of £8.6 million</p>	<p>How will this affect firefighter numbers</p> <p>wholetime: 570 (decreasing to 432) on-call: 437 (increasing to 466)</p> <p>Financial information</p> <p>Requires 2% increase the fire service proportion of council tax: Approx £1.35 on a Band D property</p> <p>Projected savings of £6.4 million</p>	<p>How will this affect firefighter numbers</p> <p>wholetime: 570 (decreasing to 336) on-call: 437 (increasing to 467)</p> <p>Financial information</p> <p>Requires NO increase in fire service proportion of council tax.</p> <p>Projected savings of £10 million</p>	
<p>Glossary</p> <ul style="list-style-type: none"> Wholetime firefighters are permanently based at, and mobilised from, a fire station. On-call firefighters often have other jobs and/or responsibilities, and when they are on duty, respond to calls from their home or place of work. Currently stand in 34 of the County's 50 fire stations. Day crew stations see firefighters on the fire station between Monday and Friday 9am to 5pm. During the evenings and weekends these stations are on-call status. 			



MORE DETAILS ON THE OPTIONS & HOW YOU

By Letter: ECERS 2016
From: [unclear]
make sure that your voice is heard



Public exhibitions

- At locations across Essex, Southend and Thurrock
- Drop-in sessions for the public to find out more

Date	Location
Monday 15 th February	Billericay Library
Tuesday 16 th February	Brentwood Library
Thursday 18 th February	Burnham on Crouch Library
Monday 22 nd February 2016	Rayleigh Library
Tuesday 23 rd February 2016	Colchester Library
Thursday 25 th February 2016	Chelmsford Library
Monday 29 th February 2016	Harlow Library
Tuesday 1 st March 2016	Harwich Library
Thursday 3 rd March 2016	Loughton Library
Monday 7 th March 2016	Dunmow Library
Tuesday 8 th March 2016	Waltham Abbey Library
Thursday 10 th March 2016	South Woodham Ferrers Library
Monday 14 th March 2016	Basildon Library
Tuesday 15 th March 2016	Clacton-on-Sea Library
Thursday 17 th March 2016	Braintree Library
Monday 21 st March 2016	Grays Library
Tuesday 22 nd March 2016	The Forum, Southend



Focus groups/forums

- ORS will facilitate and capture feedback
- Public, partner, business and staff
- Staff focus groups w/c 11th April

Partner focus group on the 12th April at 11am please contact the Programme Team if you would like to attend.

consultation.2020@essex-fire.gov.uk



Analysis/reporting

- ORS will analyse questionnaire responses
- Consultation results will be reviewed
- Report will go to EFA 8th June for a decision



What's next?

Please make sure you have your say and respond to the consultation by:

- Complete the online questionnaire at: www.opinionresearch.co.uk/essex
- Email us at: consultation.2020@essex-fire.gov.uk
- Write to us at: ECFRS 2020 Programme
Freepost
Kelvedon Park
London Road
Kelvedon
Essex, CM8 3HB